

SIA Gaismas Stils

Maskavas iela 12, Rīga, LV-1050, Latvija

Operator Edgars Svētiņš  
 Telephone +371 26354740  
 Fax +371 67225072  
 e-Mail edgars@gaismasstils.lv

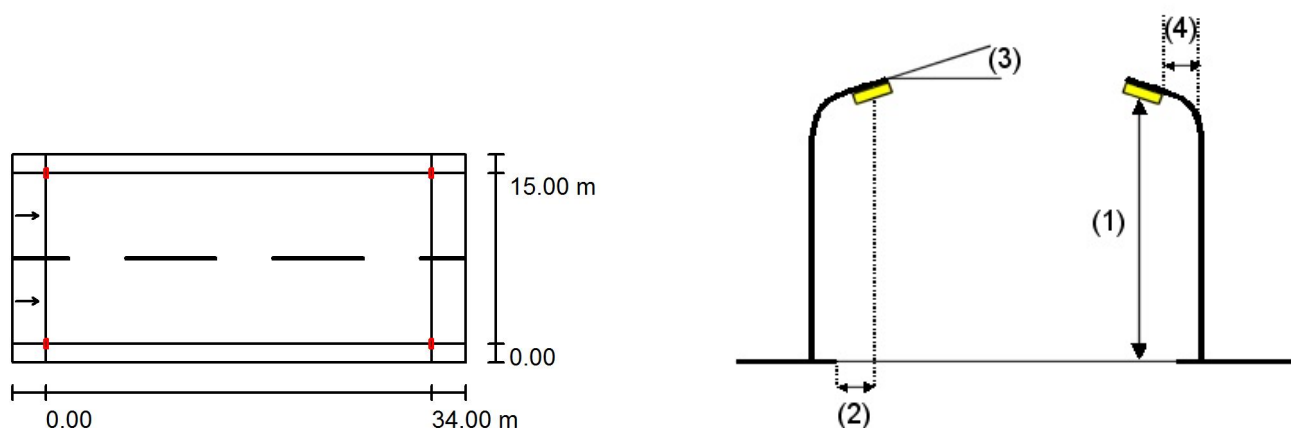
## Uzvaras ielas posms / Planning data

### Street Profile

Sidewalk 1 (Width: 1.650 m)  
 Roadway 1 (Width: 15.000 m, Number of lanes: 2, tarmac: R3, q0: 0.070)  
 Sidewalk 2 (Width: 1.650 m)

Light loss factor: 0.80

### Luminaire Arrangements



Luminaire:	CREE XSPC02275E--K_24-Q8 3000K XSP1 - E - Type 275 - Q8
Luminous flux (Luminaire):	6917 lm
Luminous flux (Lamps):	7182 lm
Luminaire Wattage:	92.0 W
Arrangement:	Double row, opposing
Pole Distance:	34.000 m
Mounting Height (1):	10.100 m
Height:	10.000 m
Overhang (2):	0.000 m
Boom Angle (3):	0.0 °
Boom Length (4):	2.000 m

Maximum luminous intensities

at 70°: 770 cd/klm

at 80°: 218 cd/klm

at 90°: 0.00 cd/klm

Any direction forming the specified angle from the downward vertical, with the luminaire installed for use.

No luminous intensities above 95°.

Arrangement complies with glare index class D.2.

SIA Gaismas Stils

Maskavas iela 12, Rīga, LV-1050, Latvija

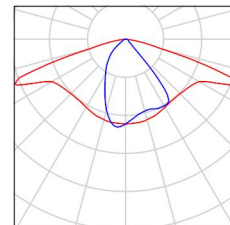
Operator Edgars Svētiņš  
Telephone +371 26354740  
Fax +371 67225072  
e-Mail [edgars@gaismasstils.lv](mailto:edgars@gaismasstils.lv)

---

**Uzvaras ielas posms / Luminaire parts list**

---

CREE XSPC02275E--K\_24-Q8 3000K XSP1 - E  
- Type 275 - Q8  
Article No.: XSPC02275E--K\_24-Q8 3000K  
Luminous flux (Luminaire): 6917 lm  
Luminous flux (Lamps): 7182 lm  
Luminaire Wattage: 92.0 W  
Luminaire classification according to CIE: 100  
CIE flux code: 47 78 97 100 97  
Fitting: 1 x 5 LED MD-A Q8 4K 12V (Correction  
Factor 1.000).

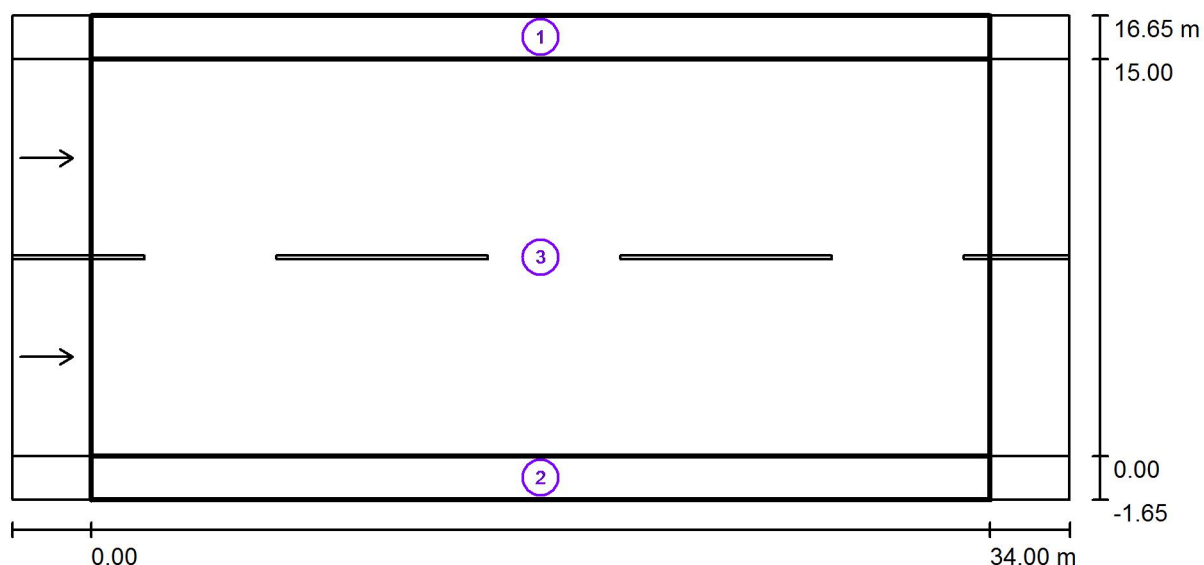


SIA Gaismas Stils

Maskavas iela 12, Rīga, LV-1050, Latvija

Operator Edgars Svētiņš  
Telephone +371 26354740  
Fax +371 67225072  
e-Mail edgars@gaismasstils.lv

## Uzvaras ielas posms / Photometric Results



Light loss factor: 0.80

Scale 1:286

### Calculation Field List

- Valuation Field Sidewalk 1  
Length: 34.000 m, Width: 1.650 m  
Grid: 12 x 3 Points  
Accompanying Street Elements: Sidewalk 1.  
Selected Lighting Class: S3 (All lighting performance requirements are met.)

	$E_{av}$ [lx]	$E_{min}$ [lx]
Calculated values:	11.16	4.82
Required values according to class:	$\geq 7.50$	$\geq 1.50$
Fulfilled/Not fulfilled:	✓	✓

SIA Gaismas Stils

Maskavas iela 12, Rīga, LV-1050, Latvija

Operator Edgars Svētiņš  
 Telephone +371 26354740  
 Fax +371 67225072  
 e-Mail edgars@gaismasstils.lv

## Uzvaras ielas posms / Photometric Results

### Calculation Field List

#### 2 Valuation Field Sidewalk 2

Length: 34.000 m, Width: 1.650 m

Grid: 12 x 3 Points

Accompanying Street Elements: Sidewalk 2.

Selected Lighting Class: S3 (All lighting performance requirements are met.)

Calculated values:

Required values according to class:

Fulfilled/Not fulfilled:

$E_{av}$ [lx]	$E_{min}$ [lx]
11.16	4.82
$\geq 7.50$	$\geq 1.50$
✓	✓

#### 3 Valuation Field Roadway 1

Length: 34.000 m, Width: 15.000 m

Grid: 12 x 6 Points

Accompanying Street Elements: Roadway 1.

tarmac: R3, q0: 0.070

Selected Lighting Class: ME3b (All lighting performance requirements are met.)

Calculated values:

Required values according to class:

Fulfilled/Not fulfilled:

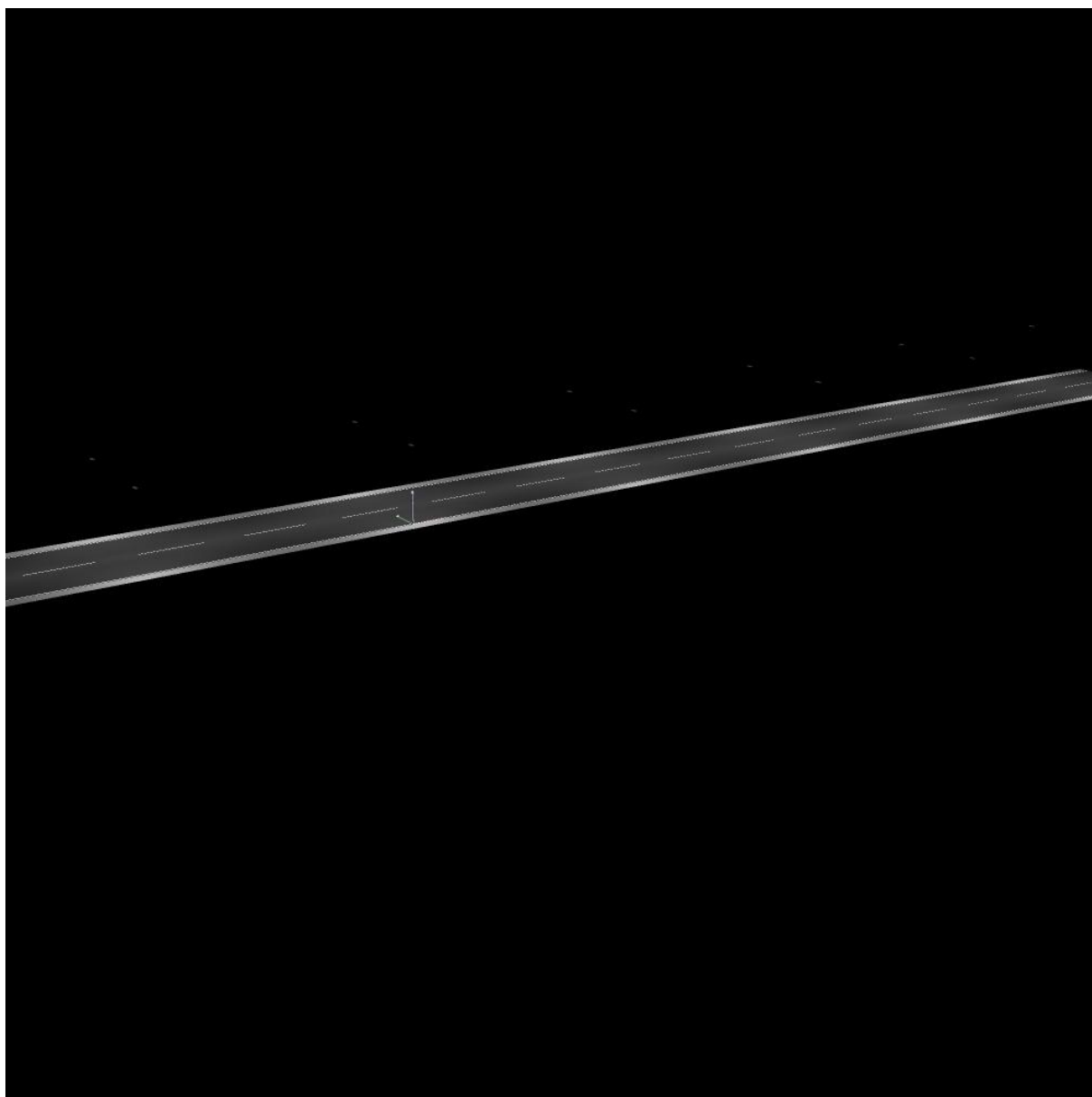
$L_{av}$ [cd/m <sup>2</sup> ]	U0	UI	TI [%]	SR
1.06	0.79	0.85	10	0.67
$\geq 1.00$	$\geq 0.40$	$\geq 0.60$	$\leq 15$	$\geq 0.50$
✓	✓	✓	✓	✓

SIA Gaismas Stils

Maskavas iela 12, Rīga, LV-1050, Latvija

Operator Edgars Svētiņš  
Telephone +371 26354740  
Fax +371 67225072  
e-Mail [edgars@gaismasstils.lv](mailto:edgars@gaismasstils.lv)

## **Uzvaras ielas posms / 3D Rendering**

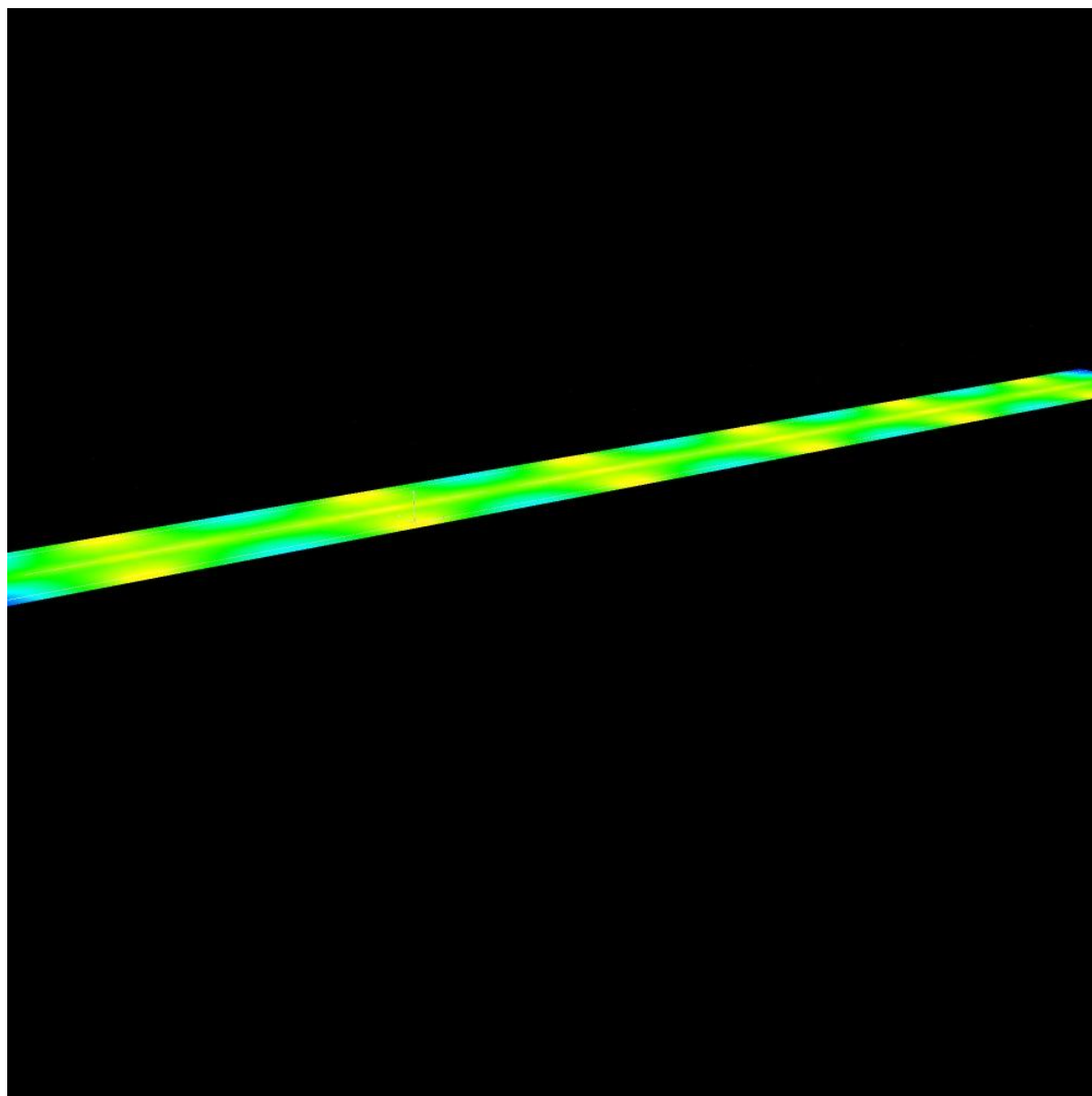


SIA Gaismas Stils

Maskavas iela 12, Rīga, LV-1050, Latvija

Operator Edgars Svētiņš  
Telephone +371 26354740  
Fax +371 67225072  
e-Mail edgars@gaismasstils.lv

## Uzvaras ielas posms / False Color Rendering



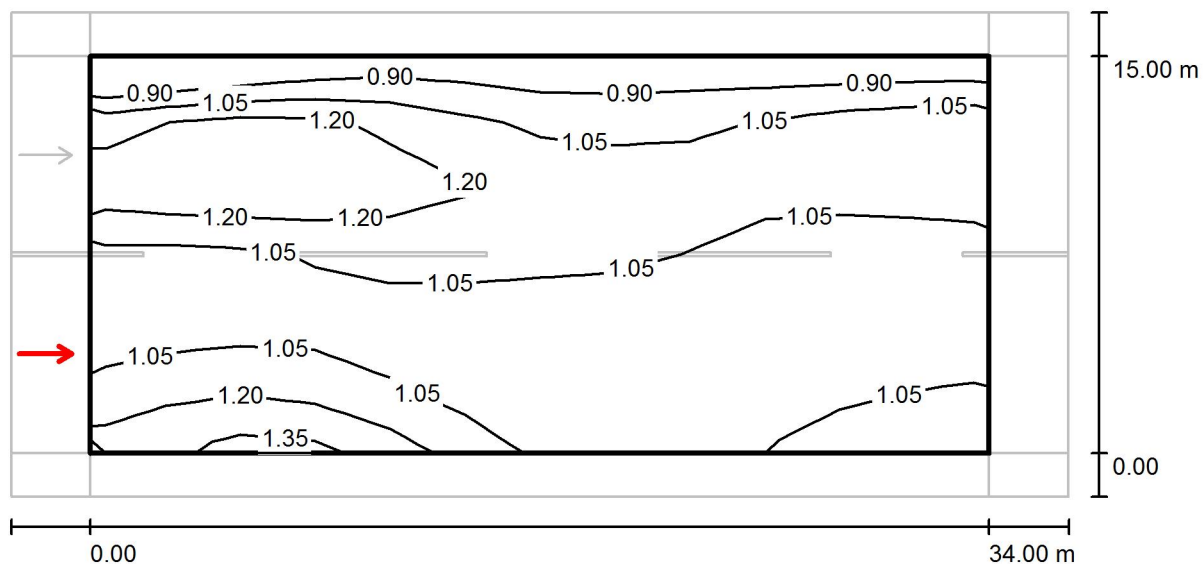
0 1 2 5 10 20 40 50 100 lx

SIA Gaismas Stils

Maskavas iela 12, Rīga, LV-1050, Latvija

Operator Edgars Svētiņš  
Telephone +371 26354740  
Fax +371 67225072  
e-Mail edgars@gaismasstils.lv

## Uzvaras ielas posms / Valuation Field Roadway 1 / Observer 1 / Isolines (L)



Values in Candela/m², Scale 1 : 286

Grid: 12 x 6 Points

Observer Position: (-60.000 m, 3.750 m, 1.500 m)

tarmac: R3, q0: 0.070

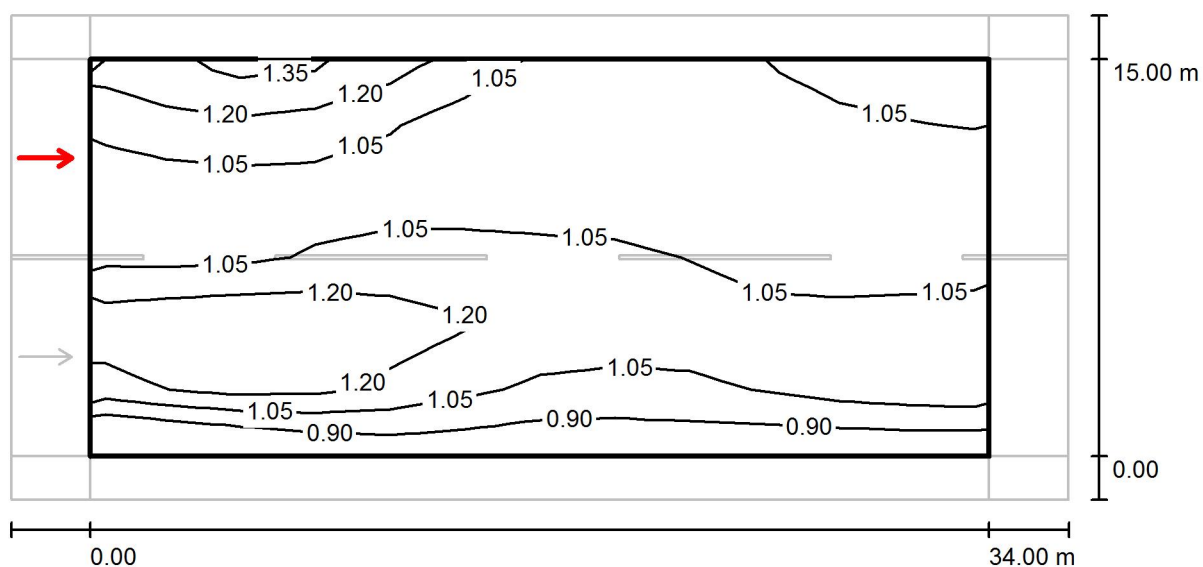
	$L_{av}$ [cd/m²]	U0	UI	TI [%]
Calculated values:	1.06	0.79	0.85	10
Required values according to class ME3b:	≥ 1.00	≥ 0.40	≥ 0.60	≤ 15
Fulfilled/Not fulfilled:	✓	✓	✓	✓

SIA Gaismas Stils

Maskavas iela 12, Rīga, LV-1050, Latvija

Operator Edgars Svētiņš  
 Telephone +371 26354740  
 Fax +371 67225072  
 e-Mail edgars@gaismasstils.lv

### Uzvaras ielas posms / Valuation Field Roadway 1 / Observer 2 / Isolines (L)

Values in Candela/m<sup>2</sup>, Scale 1 : 286

Grid: 12 x 6 Points

Observer Position: (-60.000 m, 11.250 m, 1.500 m)

tarmac: R3, q0: 0.070

	$L_{av}$ [cd/m <sup>2</sup> ]	U0	UI	TI [%]
Calculated values:	1.06	0.79	0.85	10
Required values according to class ME3b:	≥ 1.00	≥ 0.40	≥ 0.60	≤ 15
Fulfilled/Not fulfilled:	✓	✓	✓	✓